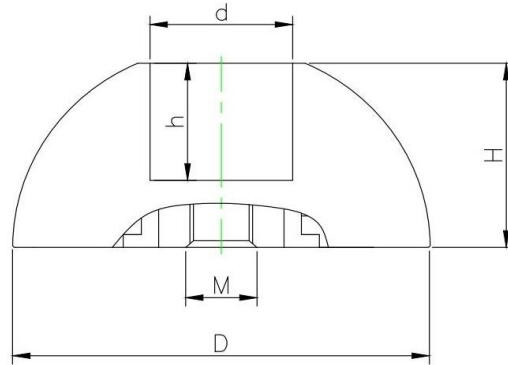


# NdFeB Recess Former Pro for Foot Anchor



Item No	D	H	h	d	M	Force		
	mm	mm	mm	mm		Kg	N	Lbs
RDNB60F-P-1.3t	60	27.5	18.5	20.5	M8	150	1470	330
RDNB74F-P-2.5t	74	33	22	30	M10	190	1862	418
RDNB94F-P-5t	94	42	27	37	M12	230	2254	506
RDNB118F-P-10t	118	53	40	47.5	M12	360	3528	792

\*We test the holding force of magnetic assembly by attaching it on a 20mm thick steel sheet at room temperature and then pulling it slowly in vertical direction with the device that is sensitive enough to record the strength at the moment when magnetic assembly is separated from the steel sheet. This is to give you a reference where the actual holding force in real application could be different with the change of, for example, pulling direction, thickness of the surface et

06 Shuttering Magnet